

TIMBRE web based site assessment and re-use planning tool (SAT)

The TIMBRE web based site assessment and re-use planning tool (SAT) is intended to serve the purpose of initiating and fostering communication among stakeholders with respect to (i) the joint design of brownfield reuse options, and (ii) the evaluation of the consequences of these options with respect to criteria such as remediation costs, sustainability, market values, etc.

The tool is specifically designed for use by interested stakeholders including non-experts, i.e. laypeople. By providing “light” versions of diverse existing expert desktop software programs for planning and assessment, the tool offers a wider group of users the utilization of these software programs via the internet. The capabilities of the web based “light” versions are limited as compared to the desktop versions in the sense that only a subset of input parameters is changeable by the user, i.e. those kinds of parameters that can reasonably be specified by non-experts. The web based version, therefore, has limited capabilities in terms of interactive data handling by end users, but has full assessment and modelling features and works on the full data set used by the expert version.

The structure of the web tool and implemented modules is illustrated in Figure 1. It is distinguished between

- site-specific assessment modules that evaluate the situation/conditions at a site with respect to a particular aspect (e.g. bioenergy potential) in general (for the site but not specific to a certain re-use option), and
- option-specific assessment modules that evaluate the situation/conditions at a site with respect to a particular aspect and a particular re-use option (e.g. estimation of costs for remediation required to implement the re-use option)

Additions to the tool can be made with respect to both types of assessment modules.



Figure 1 Structure of the TIMBRE web based site assessment and re-use planning tool (SAT).

Figure 2 shows the implemented tool with its modules organized as register tabs and sub register tabs.

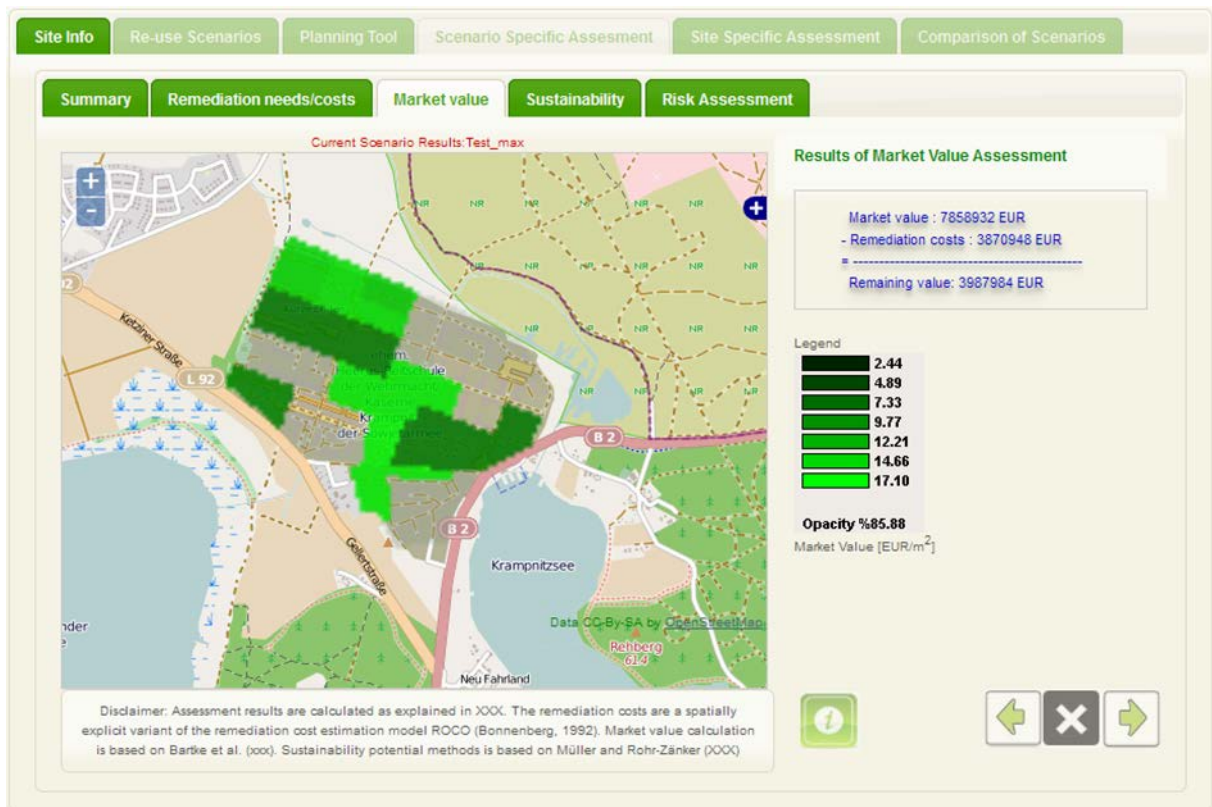


Figure 2 Graphical user interface of the TIMBRE web-based site assessment tool (here: sub register tab “Market value” with market value map [EUR/m²] and total remaining value [EUR] for model site ‘Krampnitz’).